



PRODUCTION WORKSHOP

生产车间



优立人精良先进的生产装备，运用崭新的工业概念及强大的技术力量，生产出符合国际标准的高品质产品，从而加快了企业的生产化速度。无论是产品原材料的选择还是产品的出厂检验，优立人均一丝不苟地按照国际标准严格把关，使出厂产品合格率保持100%，真正确保产品的卓越品质

With sophisticated and advanced production equipment, Youli people use brand-new industrial concepts and strong technical force to produce high-quality products in line with international standards, thus speeding up the production speed of the enterprise. Whether it is the selection of raw materials or the delivery inspection of products, Youli strictly checks in accordance with international standards so as to maintain the qualification rate of delivered products at 100%, and truly ensure the excellent quality of products.



DISPLAY OF SOME PRODUCTS

部份产品展示



目录

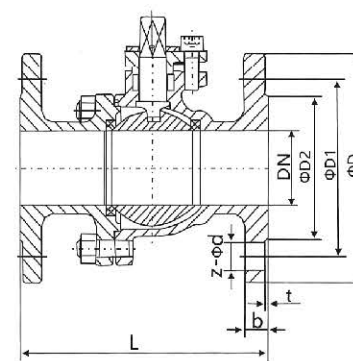


CONTENTS

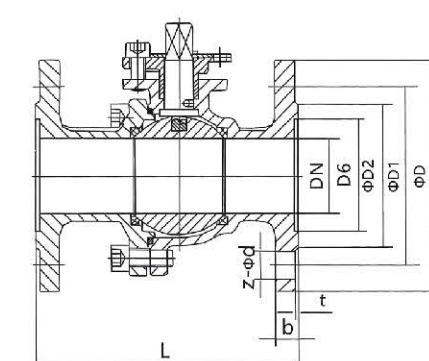


国标法兰球阀	01
美标法兰球阀	03
国标闸阀	05
美标闸阀	07
国标截止阀	08
美标截止阀	10
多夹式三偏心多层次硬密封蝶阀	11
法兰式三偏心多层次硬密封蝶阀	12
国标旋启式止回阀	14
美标止回阀	15
国标升降式止回阀	16
国标立式止回阀	17
国标Y型过滤器	18
美标Y型过滤器	19

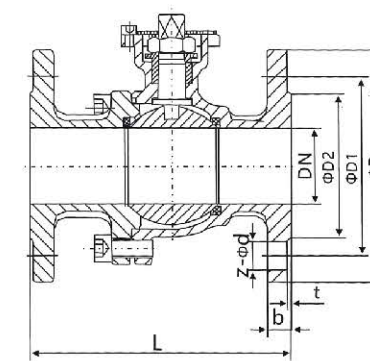
国标法兰球阀 GB/T Flange Ball Valve



不带平台



低平台



高平台

设计标准

技术规范: 国标
设计标准: GB/T 12237
结构长度: GB/T 12221
连接法兰: GB/T9113 JB79 HG20592
试验与检验: GB/T12237 JB9092

Design standards

Technical Specification: GB/T
Design Standard: GB/T 12237
Face to Face: GB/T12221.
Flanged End: GB/T 9113 JB79 HG20592
Test and Inspection: GB/T 12237 JB 9092

性能规范

公称压力: 1.6,2.5,4.0,6.3MPa
强度实验: 2.4,3.8,6.0,9.5MPa
密封试验: 1.8,2.8,4.4,7.0MPa
上密封试验: 1.8,2.8,4.4,7.0MPa
气密封试验: 0.6MPa

阀门主体材料: WCB(C),CF8(P),CF3(PL),
CF8M(R),CF3M(RL)

适用介质: 水、蒸汽、油品、
硝酸类、醋酸类

适用温度: -29°C ~ 180°C

Specifications

Nominal pressure: 1.6,2.5,4.0,6.3MPa
Strength test: 2.4,3.8,6.0,9.5MPa
Seal test: 1.8,2.8,4.4,7.0MPa
Back seal test: 1.8,2.8,4.4,7.0MPa
Gas seal test: 0.6MPa

Valve body material: WCB(C),CF8(P),CF3(PL),
CF8M(R),CF3M(RL)

Suitable medium: water,steam,oil products,
nitric acid,acetic acid

Suitable temperature: -29°C ~ 180°C

主要零件材料 Materials of main parts

材料名称Material name	碳钢Carbon steel	不锈钢Stainless steel	
阀体 Body	A216 WCB	A351 CF8	A351 CF8
阀盖 Bonnet	A216 WCB	A351 CF8	A351 CF8
球体 Ball	A276 304/A276 316		
阀杆 Stem	2Cr13/A276 304/A276 316		
阀座 Seat	PTFE, RPTFE		
填料 Gland Packing	PTFE/柔性石墨 PTFE/Flexible Graphite		
压盖 Gland	A216 WCB	A315 CF8	
螺栓 Bolt	A193-B7	A193-B8M	
螺母 Nut	A194-2H	A194-8	

国标法兰球阀 GB/T Flange Ball Valve



主要外形尺寸和连接尺寸 Main dimensions and connection dimensions

国标(GB)1.6MPa 单位: mm

公称通径 DN(mm)	L	D	D1	D2	b	t	z-Φd
15	130	95	65	45	14	2	4-Φ14
20	140	105	75	55	14	2	4-Φ14
25	150	115	85	65	14	2	4-Φ14
32	165	140/135	100	78	16	2	4-Φ18
40	180	150/145	110	85	16	3	4-Φ18
50	200	165/160	125	100	16	3	4-Φ18
65	220	185/180	145	120	18	3	4-Φ18
80	250	200/195	160	135	20	3	8-Φ18
100	280	220/215	180	155	20	3	8-Φ18
125	320	250/245	210	185	22	3	8-Φ18
150	360	285/280	240	210	22	3	8-Φ23
200	400	340/335	295	265	24	3	12-Φ23
250	533	405	355	320	26	3	12-Φ25
300	610	460	410	375	28	4	12-Φ25
350	686	520	470	435	32	4	16-Φ25
400	762	580	525	485	36	4	16-Φ30

国标(GB)2.5MPa 单位: mm

公称通径 DN(mm)	L	D	D1	D2	b	t	z-Φd
15	130	95	65	45	16	2	4-Φ14
20	140	105	75	55	16	2	4-Φ14
25	150	115	85	65	16	2	4-Φ14
32	165	140/135	100	78	18	2	4-Φ18
40	180	150/145	110	85	18	3	4-Φ18
50	200	165/160	125	100	20	3	4-Φ18
65	220	185/180	145	120	22	3	8-Φ18
80	250	200/195	160	135	22	3	8-Φ18
100	280	230	190	160	24	3	8-Φ23
125	320	270	220	188	26	3	8-Φ25
150	360	300	250	218	28	3	8-Φ25
200	400	360	310	278	30	3	12-Φ25
250	533	425	370	332	32	3	12-Φ30
300	610	485	430	390	36	4	16-Φ30
350	762	555/550	490	448	40	4	16-Φ34
400	838	620/610	550	505	44	4	16-Φ34

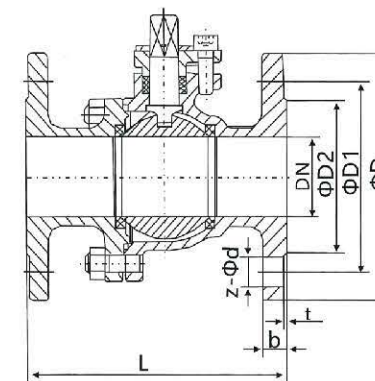
国标 (GB) 4.0MPa 单位: mm

公称通径 DN(mm)	L	D	D1	D2	D6	b	t	z-Φd
15	140	95	65	45	40	16	2	4-Φ14
20	152	105	75	55	51	16	2	4-Φ14
25	165	115	85	65	58	16	2	4-Φ14
32	178	140/135	100	78	66	18	2	4-Φ18
40	190	150/145	110	85	76	18	3	4-Φ18
50	216	165/160	125	100	88	20	3	4-Φ18
65	241	185/180	145	120	110	22	3	8-Φ18
80	283	200/195	160	135	121	24	3	8-Φ18
100	305	235/230	190	160	150	26	3	8-Φ23
125	381	270	220	188	176	28	3	8-Φ25
150	403	300	250	218	204	30	3	8-Φ25
200	419	375	320	282	260	38	3	12-Φ30
250	457	450/445	385	345	313	42	3	12-Φ34
300	502	515/510	450	408	364	46	4	16-Φ34
350	762	580/570	510	465	422	52	4	16-Φ34
400	838	660/665	585	535	474	58	4	16-Φ41

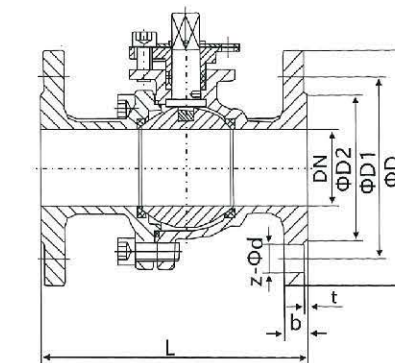
国标 (GB) 6.3MPa 单位: mm

公称通径 DN(mm)	L	D	D1	D2	D6	b	t	z-Φd
15	140	105	75	55	40	18	2	4-Φ14
20	152	130/125	90	68	51	20	2	4-Φ18
25	165	140/135	100	78	58	22	2	4-Φ18
32	178	155/150	110	82	66	24	2	4-Φ23
40	190	170/165	125	95	76	24	3	4-Φ23
50	216	180/175	135	105	88	26	3	4-Φ23
65	241	205/200	160	130	110	28	3	8-Φ23
80	283	215/210	170	140	121	30	3	8-Φ23
100	305	250	200	168	150	32	3	8-Φ25
125	381	295	240	202	176	36	3	8-Φ30
150	403	345/340	280	240	204	38	3	8-Φ34
200	419	415/405	345	300	260	44	3	12-Φ34
250	457	470	400	352	313	48	3	12-Φ41
300	502	530	460	412	364	54	3	16-Φ41
350	762	600/595	525	475	422	60	3	16-Φ41

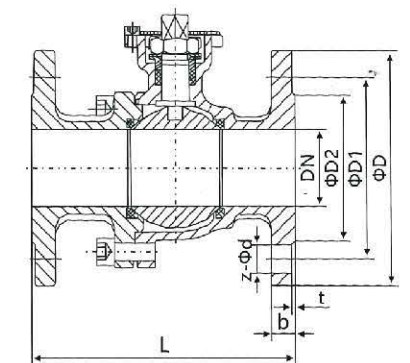
美标法兰球阀 ANSI/ASME Flange Ball Valve



不带平台



低平台



高平台

设计标准

技术规范: 美标
设计标准: API6D API608
结构长度: ASME B16.10
连接法兰: ASME B16.5
试验与检验: API6D API598

Design standards

Technical specifications: ASME/ANSI
Design and Manufacture: API6D API608
Structure length: ASME B16.10
Flanged end: ASME B16.5
Inspection and test: API6D API598

性能规范

公称压力: 150,300,600LB
强度试验: PT3.0,7.5,15MPa
密封试验: 2.2,5.5,11MPa
上密封试验: 2.2,5.5,11MPa
气密封试验: 0.6MPa
阀门主体材料: WCB(C),CF8(P),CF3(PL),
CF8M(R),CF3M(RL)
适用介质: 水、蒸汽、油品、
硝酸类、醋酸类
适用温度: -29°C ~ 180°C

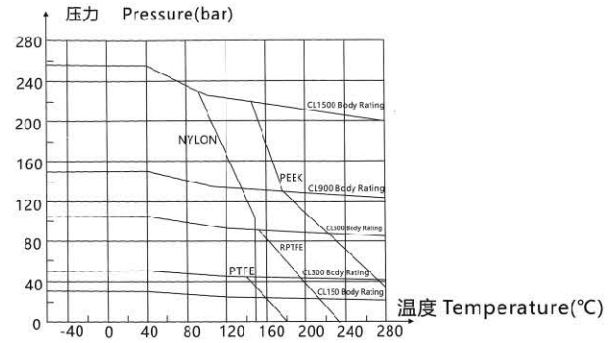
Specifications

Nominal pressure: 150,300,600 LB
Strength test: PT3.0,7.5,15 MPa
Seal test: 2.2,5.5,11 Mpa
Back seal test: 2.2,5.5,11 MPa
Gas seal test: 0.6MPa
Valve body material: WCB(C),CF8(P)CF3(PL),
CF8M(R),CF3M(RL)
Suitable medium: water,steam,oil products,
nitric acid, acetic acid
Suitable temperature: -29°C ~ 180°C

主要零件材料 Materials of main parts

材料名称Material name	碳钢Carbon steel	不锈钢Stainless steel	
阀体 Body	A216 WCB	A351 CF8	A351 CF8
阀盖 Bonnet	A216 WCB	A351 CF8	A351 CF8
球体 Ball	A276 304/A276 316		
阀杆 Stem	2Cr13/A276 304/A276 316		
阀座 Seat	PTFE, RPTFE		
填料 Gland Packing	PTFE/柔性石墨 PTFE/Flexible Graphite		
压盖 Gland	A216 WCB	A315 CF8	
螺栓 Bolt	A193-B7	A193-B8M	
螺母 Nut	A194-2H	A194-8	

美标法兰球阀 ANSI/ASME Flange Ball Valve



主要外形尺寸和连接尺寸 Main dimensions and connection dimensions

美标 (ANSI) 150LB 单位: mm

公称通径 Nominal Diameter		L	D	D1	D2	b	t	z-Φd
in	DN							
1/2"	15	108	90	60.3	34.9	11.5	1.6	4-Φ16
3/4"	20	117	100	69.9	42.9	13	1.6	4-Φ16
1"	25	127	110	79.4	50.8	14.5	1.6	4-Φ16
1 1/4"	32	140	115	88.9	63.5	16	1.6	4-Φ16
1 1/2"	40	165	125	98.4	73	17.5	1.6	4-Φ16
2"	50	178	150	120.7	92.1	19.5	1.6	4-Φ19
2 1/2"	65	190	180	139.7	104.8	22.5	1.6	4-Φ19
3"	80	203	190	152.4	127	24	1.6	4-Φ19
4"	100	229	230	190.5	157.2	24	1.6	8-Φ19
5"	125	356	255	215.9	185.7	24	1.6	8-Φ22
6"	150	394	280	241.3	215.9	25.5	1.6	8-Φ22
8"	200	457	345	298.5	269.9	29	1.6	8-Φ22
10"	250	533	405	362	323.8	30.5	1.6	12-Φ25
12"	300	610	485	431.8	381	32	1.6	12-Φ25
14"	350	686	535	476.3	412.8	35.0	1.6	12-Φ29
16"	400	762	595	539.8	469.9	37	1.6	16-Φ29

美标(ANSI)300LB 单位: mm

公称通径 Nominal Diameter		L	D	D1	D2	b	t	z-Φd
in	DN							
1/2"	15	140	95	66.7	34.9	14.5	1.6	4-Φ16
3/4"	20	152	115	82.6	42.9	16	1.6	4-Φ19
1"	25	165	125	88.9	50.8	17.5	1.6	4-Φ19
1 1/4"	32	178	135	98.4	63.5	19.5	1.6	4-Φ19
1 1/2"	40	190	155	114.3	73	21	1.6	4-Φ22
2"	50	216	165	127	92.1	22.5	1.6	8-Φ19
2 1/2"	65	241	190	149.2	104.8	25.5	1.6	8-Φ22
3"	80	282	210	168.3	127	29	1.6	8-Φ22
4"	100	305	255	200	157.2	32	1.6	8-Φ22
5"	125	381	280	235	185.7	35	1.6	8-Φ22
6"	150	403	320	269.9	215.9	37	1.6	12-Φ22
8"	200	502	380	330.2	269.9	41.5	1.6	12-Φ25
10"	250	568	445	387.4	323.8	48	1.6	16-Φ29
12"	300	648	520	450.8	381	51.0	1.6	16-Φ32
14"	350	762	585	514.4	412.8	54.0	1.6	20-Φ32
16"	400	838	650	571.5	469.9	57.5	1.6	20-Φ35

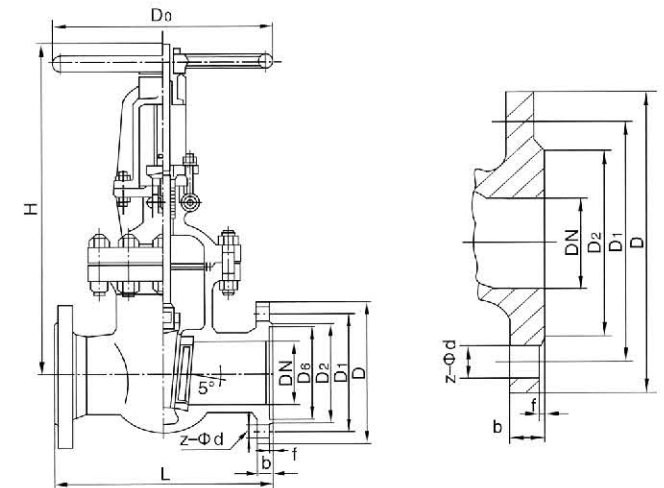
美标 (ANSI) 600LB 单位: mm

公称通径 Nominal Diameter		L	D	D1	D2	b	t	z-Φd
in	DN							
1/2"	15	165	95	66.7	34.9	21	6.4	4-Φ16
3/4"	20	190	115	82.6	42.9	23	6.4	4-Φ19
1"	25	216	125	88.9	50.8	24	6.4	4-Φ19
1 1/4"	32	229	135	98.4	63.5	27.5	6.4	4-Φ19
1 1/2"	40	241	155	114.3	73	29	6.4	4-Φ22
2"	50	292	165	127	92.1	32	6.4	8-Φ19
2 1/2"	65	330	190	149.2	104.8	35	6.4	8-Φ22
3"	80	356	210	168.3	127	38.5	6.4	8-Φ22
4"	100	432	275	215.9	157.2	45	6.4	8-Φ25
5"	125	508	330	266.7	185.7	51.5	6.4	8-Φ29
6"	150	559	355	292.1	215.9	54.5	6.4	12-Φ29
8"	200	660	420	349.2	269.9	62	6.4	12-Φ32
10"	250	787	510	431.8	323.8	70	6.4	16-Φ35
12"	300	838	560	489	381	73.5	6.4	20-Φ35
14"	350	889	605	527	412.8	76.5	6.4	20-Φ39

国标闸阀 GB/T Gate Valve



Z41W-16P



主要零件材质 Materials of main parts

零件名称 Part Name	ZG1Cr18Ni9Ti 304 CF8	ZG00Cr18Ni10 304L CF3	ZG1Cr18Ni12Mo2Ti 316 CF8M	ZG00Cr17Ni14Mo2 316L CF3M	WCB
阀体/阀盖 Valve body/bonnet	0Cr18Ni9	00Cr18Ni10	0Cr18Ni9Mo2	00Cr18Ni10Mo2	WCB
闸板 Brake	0Cr18Ni9	00Cr18Ni10	0Cr18Ni9Mo2	00Cr18Ni10Mo2	1Cr13
阀杆 Stem	0Cr18Ni9	00Cr18Ni10	0Cr18Ni9Mo2	00Cr18Ni10Mo2	1Cr13
阀杆螺母 Valve Pole Nut	铝青铜 Aluminium Bronze				
填料 Packing	PTFE编织	PTFE编织	PTFE编织	PTFE编织	石墨 Graphite
垫片 Gasket	304+PTFE	304L+PTFE	316+PTFE	316L+PTFE	石墨+304
压盖 Gland Flange	0Cr18Ni9	00Cr18Ni10	0Cr18Ni9Mo2	00Cr18Ni10Mo2	WCB
螺栓 Bolt	不锈钢 Stainless Steel				
螺母 Nut	不锈钢 Stainless Steel				
手轮 Handwheel	球墨铸铁、铸钢 Nodular Cast Iron And Cast Steel				

主要连接尺寸 Main connection dimensions

型号 Type	公称通径 Nominal diameter DN(mm)	尺寸 Dimension (mm)							
		L	D	D1	D2	b-f	z-Φd	H	D0
Z41W-1.6MPa	15	130	95	65	45	14-2	4-14	170	120
	20	150	105	75	55	14-2	4-14	200	120
	25	160	115	85	65	14-2	4-14	215	140
	32	180	135	100	78	16-2	4-18	260	160
	40	200	145	110	85	16-3	4-18	290	200
	50	250	160	125	100	16-3	4-18	345	220
	65	265	180	145	120	18-3	4-18	360	240
	80	280	195	160	135	20-3	8-18	385	280
	100	300	215	180	155	20-3	8-18	430	300
	125	325	245	210	185	22-3	8-18	520	320
Z41H-1.6MPa	150	350	280	240	210	24-3	8-23	610	350
	200	400	335	295	265	26-3	12-23	765	400
	250	450	405	355	320	30-3	12-25	895	450
	300	500	460	410	375	30-4	12-25	1145	500
	350	550	520	470	435	34-4	16-25	1200	550
	400	600	580	525	485	36-4	16-30	1400	600
	450	650	640	585	545	40-4	20-30	1500	650
	500	700	705	650	608	44-4	20-34	1630	700
	600	800	840	770	718	48-5	20-41	1830	800

国标闸阀 GB/T Gate Valve

产品特征 Product characteristics

公称压力 Nominal Pressure: 1.6~6.4Mpa

适用温度范围 Applicable temperature range :不锈钢≤200℃

适用介质: 硝酸类、醋酸类、水、油、气类及某些腐蚀性液体。

Applicable medium :Nitric acid、Acetic acid、water、oil、gas and some corrosive liquid.

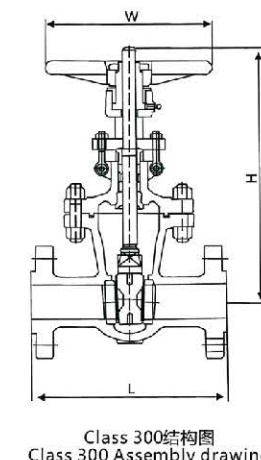
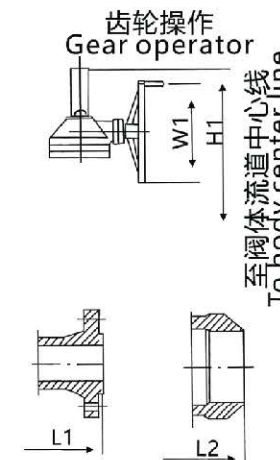
主要连接尺寸 Main connection dimensions

型号 Type	公称直径 Nominal diameter DN(mm)	尺寸 Dimension(mm)							
		L	D	D ₁	D ₂	b-f	z-φd	H	D ₀
Z41W-2.5MPa	15	130	95	65	45	16-2	4-14	170	120
	20	150	105	75	55	16-2	4-14	200	120
	25	160	115	85	65	16-2	4-14	215	140
	32	180	135	100	78	18-2	4-18	260	160
	40	200	145	110	85	18-3	4-18	290	200
	50	250	160	125	100	20-3	4-18	345	220
	65	265	180	145	120	22-3	8-18	360	240
	80	280	195	160	135	22-3	8-18	385	280
	100	300	230	190	160	24-3	8-23	430	300
	125	325	270	220	188	28-3	8-25	520	320
Z41H-2.5MPa	150	350	300	250	218	30-3	8-25	610	350
	200	400	360	310	278	34-3	12-25	765	400
	250	450	425	370	332	36-3	12-30	900	450
	300	500	485	430	390	40-4	16-30	1130	500
	350	550	550	490	448	44-4	16-34	1250	550
	400	600	610	550	505	48-4	16-34	1430	600
	450	650	660	600	555	50-4	20-34	1520	650
	500	700	730	660	610	52-4	20-41	1650	700
	600	800	840	770	718	56-5	20-41	1850	800

主要连接尺寸 Main connection dimensions

型号 Type	公称直径 Nominal diameter DN(mm)	尺寸 Dimension(mm)							
		L	D	D ₁	D ₂	D _s	b-f	z-φd	H
Z41W-4.0MPa	15	130	95	65	45	40	16-2	4-14	170
	20	150	105	75	55	51	16-2	4-14	200
	25	160	115	85	65	58	16-2	4-14	215
	32	180	135	100	78	66	18-2	4-18	260
	40	200	145	110	85	76	18-3	4-18	290
	50	250	160	125	100	88	20-3	4-18	345
	65	280	180	145	120	110	22-3	8-18	360
	80	310	195	160	135	121	22-3	8-18	385
	100	350	230	190	160	150	24-3	8-23	430
	125	400	270	220	188	176	28-3	8-25	530
Z41H-4.0MPa	150	450	300	250	218	204	30-3	8-25	620
	200	550	375	320	282	260	38-3	12-30	780
	250	650	445	385	345	313	42-3	12-34	900
	15	170	105	75	55	41	18-2	4-14	175
	20	190	125	90	68	51	20-2	4-18	200
	25	210	135	100	78	58	22-2	4-18	215
	32	230	150	110	82	66	24-2	4-23	270
	40	240	165	125	95	76	24-3	4-23	300
	50	250	175	135	105	88	26-3	4-23	370
	65	280	200	160	130	110	28-3	8-23	385
Z41W-6.4MPa	80	310	210	170	140	121	30-3	8-23	400
	100	350	250	200	168	150	32-3	8-25	460
	125	400	295	240	202	176	36-3	8-30	570
	150	450	340	280	240	204	38-3	8-34	660
	200	550	405	345	300	260	44-3	12-34	820
	250	650	470	400	352	313	48-3	12-41	1000

美标闸阀 ANSI/ASME Gate Valve



设计制造标准

设计制造: API600 ASME B16.34

结构长度: ASME B16.10

连接尺寸: ASME B16.5, ASME B16.47, ASME B16.25

检验和测试: ISO 5208, API 598

Design & Manufacture Standard

Design & Manufacture: API600 ASME B16.34

Face to Face: ASME B16.10

Connection dimension: ASME B16.5, ASME B16.47, ASME B16.25

Inspection and Test: ISO 5208 API 598

主要连接尺寸 Main connection dimensions

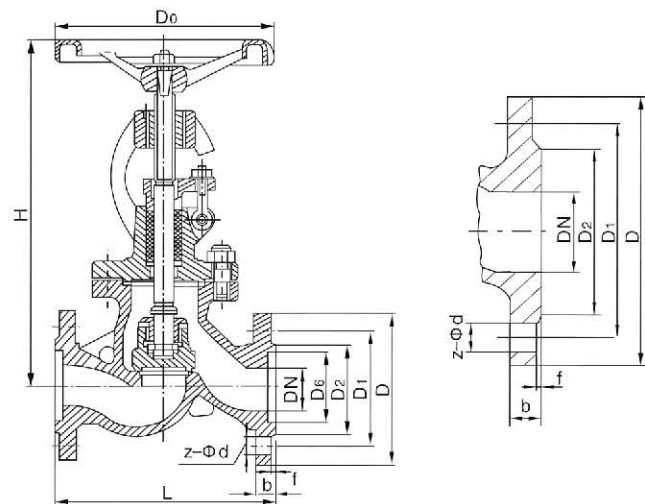
Z41(O)H(F)		Class 150																			
Size	inch	1/2	3/4	1	1 1/4	1 1/2	2	2 1/2	3	4	5	6	8	10	12	14	16	18	20	24	28
	mm	15	20	25	32	40	50	65	80	100	125	150	200	250	350	350	400	450	500	600	700
L	mm	108	117	127	140	165	178	191	203	229	254	267	292	330	381	381	406	432	457	508	610
L1	mm	-	-	-	-	203	191	203	216	241	267	279	305	343	394	394	419	445	470	521	-
L2	mm	108	117	127	140	165	216	241	283	305	381	403	419	457	572	572	610	660	711	813	914
H	mm	169	193	230	246	283	361	396	435	522	570	610	750	935	1224	1224	1345	1487	1627	1931	-
W	mm	100	125	160	160	180	250	250	280	600	350	350	400	400	600	600	600	600	680	920	-
H1	mm	-	-	-	-	-	-	-	-	-	-	-	-	1280	1670	1670	1885	2045	2210	2675	3050
W1	mm	-	-	-	-	-	-	-	-	-	-	-	-	310	490	460	460	460	460	460	600
T	N.m	-	-	-	-	-	12.4	17	23	24.5	60	85	125	138	276	276	396	491	650	1018	1492
WT(RF)	kg	5	6.1	8.4	14.3	15.4	20	30	33	49	60	75	120	205	400	400	511	650	789	1200	1800

Z41(O)H(F)		Class 300																			
Size	inch	1/2	3/4	1	1 1/4	1 1/2	2	2 1/2	3	4	5	6	8	10	12	14	16	18	20	24	28
	mm	15	20	25	32	40	50	65	80	100	125	150	200	250	300	350	400	450	500	600	700
L	mm	140	152	165	178	190	216	241	283	305	381	403	419	457	502	762	838	914	991	1143	1346
L1	mm	-	-	-	-	203	232	257	298	321	397	419	435	473	518	778	854	930	1010	1135	1372
L2	mm	140	152	165	178	190	216	241	283	305	381	403	419	457	502	762	838	914	991	1143	1346
H	mm	169	193	230	246	283	352	390	420	496	570	635	772	995	1090	1265	1385	1510	1630	-	-
W	mm	100	125	160	160	180	250	250	250	300	350	400	450	500	600	650	750	750	920	-	-
H1	mm	-	-	-	-	-	-	-	-	-	-	-	-	1375	1524	1718	1860	2077	2310	2809	3078
W1	mm	-	-	-	-	-	-	-	-	-	-	-	-	460	460	460	460	460	460	600	600
T	N.m	-	-	-	-	-	27.5	40	54	80	194	202	226	354	558	736	966	1259	1259	2658	4264
WT(RF)	kg	5.2	6.3	8.6	14.5	15.6	24	36	47	69	29	123	196	333	440	710	950	1405	1405	2770	3312

国标截止阀 GB/T Globe valve



J41W-16^P_R



产品特征 Product characteristics

公称压力 Nominal Pressure: 1.6~6.4Mpa

适用温度范围 Applicable temperature range :不锈钢 ≤200℃

适用介质: 硝酸类、醋酸类、水、油、气类及某些腐蚀性液体。

Applicable medium :Nitric acid, Acetic acid, water, oil, gas and some corrosive liquid.

主要零件材质 Materials of main parts

零件名称 Part Name	ZG1Cr18Ni9Ti 304 CF8	ZG00Cr18Ni10 304L CF3	ZG1Cr18Ni12Mo2Ti 316 CF8M	ZG00Cr17Ni14Mo2 316L CF3M	WCB
阀体/阀盖 Valve body/bonnet	0Cr18Ni9	00Cr18Ni10	0Cr18Ni9Mo2	00Cr18Ni10Mo2	WCB
阀瓣 Valve Piece	0Cr18Ni9	00Cr18Ni10	0Cr18Ni9Mo2	00Cr18Ni10Mo2	1Cr13
阀杆 Stem	0Cr18Ni9	00Cr18Ni10	0Cr18Ni9Mo2	00Cr18Ni10Mo2	1Cr13
阀杆螺母 Valve Pole Nut	铝青铜 Aluminium Bronze				
填料 Packing	PTFE编织	PTFE编织	PTFE编织	PTFE编织	石墨 Graphite
垫片 Gasket	304+PTFE	304L+PTFE	316+PTFE	316L+PTFE	石墨+304
螺栓 Bolt	不锈钢 Stainless Steel				
螺母 Nut	不锈钢 Stainless Steel				
手轮 Handwheel	球墨铸铁、铸钢 Spheroidal graphite cast iron and cast steel				

主要连接尺寸 Main connection dimensions

型号 Type	公称直径 Nominal diameter DN(mm)	尺寸 Dimension(mm)							
		L	D	D ₁	D ₂	b-f	z-φd	H	D ₀
J41W-1.6MPa	15	130	95	65	45	14-2	4-14	195	100
	20	150	105	75	55	14-2	4-14	215	120
	25	160	115	85	65	14-2	4-14	240	140
	32	180	135	100	78	16-2	4-18	250	160
	40	200	145	110	85	16-3	4-18	285	200
	50	230	160	125	100	16-3	4-18	300	220
	65	290	180	145	120	18-3	4-18	345	240
	80	310	195	160	135	20-3	8-18	350	280
	100	350	215	180	155	20-3	8-18	410	320
	125	400	245	210	185	22-3	8-18	470	350
J41H-1.6MPa	150	480	280	240	210	24-3	8-23	495	400
	200	600	335	295	265	26-3	12-23	580	450
	250	650	405	355	320	30-3	12-25	680	550
	300	750	460	410	375	30-3	12-25	850	600
	350	850	520	470	435	34-4	16-25	-	-
	400	950	580	525	485	36-4	16-30	-	-

国标截止阀 GB/T Globe valve

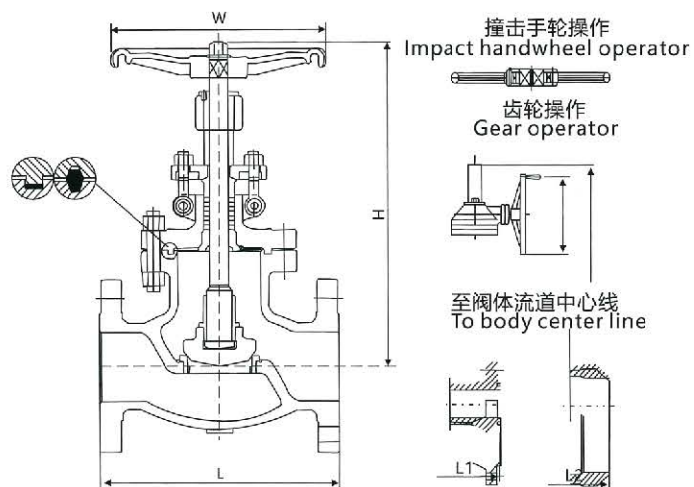
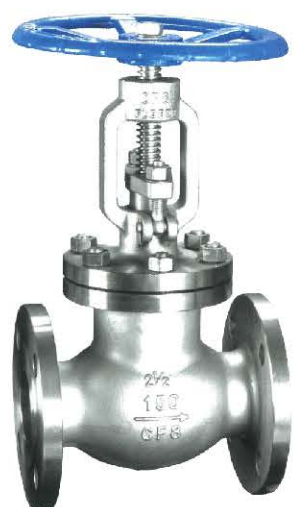
主要连接尺寸 Main connection dimensions

型号 Type	公称直径 Nominal diameter DN(mm)	尺寸 Dimension(mm)							
		L	D	D ₁	D ₂	b-f	z-φd	H	D ₀
J41W-2.5MPa	15	130	95	65	45	16-2	4-14	195	100
	20	150	105	75	55	16-2	4-14	215	120
	25	160	115	85	65	16-2	4-14	240	140
	32	180	135	100	78	18-2	4-18	250	160
	40	200	145	110	85	18-3	4-18	285	200
	50	230	160	125	100	20-3	4-18	300	220
	65	290	180	145	120	22-3	8-18	345	240
	80	310	195	160	135	22-3	8-18	350	280
	100	350	230	190	160	24-3	8-23	410	320
	125	400	270	220	188	28-3	8-25	470	350
J41H-2.5MPa	150	480	300	250	218	30-3	8-25	495	400
	200	600	360	310	278	34-3	12-25	600	450
	250	650	425	370	335	36-3	12-30	680	550
	300	750	485	430	390	40-4	16-30	850	600
	350	850	550	490	448	44-4	16-34	-	-
	400	950	610	550	505	48-4	16-34	-	-

主要连接尺寸 Main connection dimensions

型号 Type	公称直径 Nominal diameter DN(mm)	尺寸 Dimension(mm)								
		L	D	D ₁	D ₂	D ₀	b-f	z-φd	H	
J41W-4.0MPa	15	130	95	65	45	40	16-2	4-14	195	
	20	150	105	75	55	51	16-2	4-14	215	
	25	160	115	85	65	58	16-2	4-14	240	
	32	180	135	100	78	66	18-2	4-18	250	
	40	200	145	110	85	76	18-3	4-18	285	
	50	230	160	125	100	88	20-3	4-18	300	
	J41H-4.0MPa	65	290	180	145	120	110	22-3	8-18	345
		80	310	195	160	135	121	22-3	8-18	350
		100	350	230	190	160	150	24-3	8-23	410
		125	400	270	220	188	176	28-3	8-25	470
150		480	300	250	218	204	30-3	8-25	495	
200		600	375	320	282	260	38-3	12-30	600	
J41W-6.4MPa		15	170	105	75	55	41	18-2	4-14	230
		20	190	125	90	68	51	20-2	4-18	250
		25	210	135	100	78	58	22-2	4-18	260
		32	230	150	110	82	66	24-2	4-23	300
	40	260	165	125	95	76	24-3	4-23	330	
	50	300	175	135	105	88	26-3	4-23	380	
	J41H-6.4MPa	65	340	200	160	130	110	28-3	8-23	400
		80	380	210	170	140	121	30-3	8-23	430
		100	430	250	200	168	150	32-3	8-25	500
		125	500	295	240	202	176	36-3	8-30	600
150		550	340	280	240	204	38-3	8-34	680	
200		650	405	345	300	260	44-3	12-34	800	

美标截止阀 ANSI/ASME Globe valve



设计制造标准

设计制造: ASME B16.34, API602
 结构长度: ASME B16.10
 连接尺寸: ASME B16.5, ASME B16.25
 检验和测试: ISO 5208, API 598

Design & Manufacture Standard

Design & Manufacture: ASME B16.34, API602
 Face to Face: ASME B16.10
 Connection Dimension: ASME B16.5, ASME B16.25
 Inspection and Test: ISO 5208, API 598

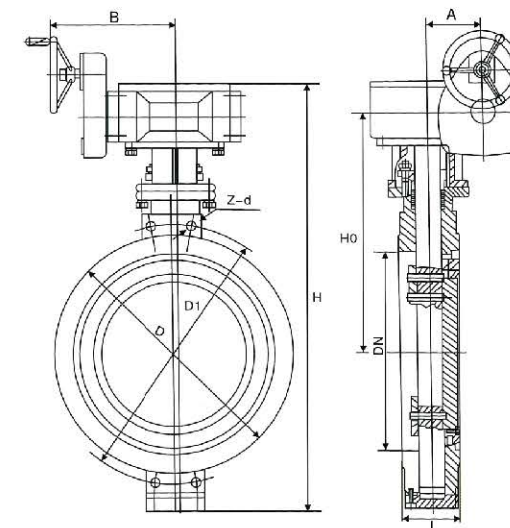
主要连接尺寸 Main connection dimensions

J41H(Y)		Class 150															
Size	inch	1/2	3/4	1	1 1/4	1 1/2	2	2 1/2	3	4	5	6	8	10	12	14	16
	mm	15	20	25	32	40	50	65	80	100	125	150	200	250	300	350	400
L	mm	108	117	127	140	165	203	216	241	292	356	406	495	622	698	787	914
L1	mm	-	-	-	-	178	216	229	254	305	368	419	508	635	711	800	927
L2	mm	108	117	127	140	165	203	216	241	292	356	406	495	622	698	787	914
H	mm	163	193	250	250	291	350	362	385	490	455	537	707	788	820	-	-
W	mm	100	125	160	160	180	220	250	280	320	320	400	450	560	560	-	-
H1	mm	-	-	-	-	-	-	-	-	-	-	-	760	830	890	1400	1648
W1	mm	-	-	-	-	-	-	-	-	-	-	-	310	310	460	600	600
T	N.m	-	-	-	-	-	31	50	72	115	170	225	427	671	1127	1231	1750
WT(RF)	kg	6.9	9.8	13.5	19.5	28.5	21	29	34	54	72	93	185	268	400	650	1113

J41H(Y)		Class 300													
Size	inch	1/2	3/4	1	1 1/4	1 1/2	2	2 1/2	3	4	5	6	8	10	12
	mm	15	20	25	32	40	50	65	80	100	125	150	200	250	300
L	mm	152	178	203	216	229	267	292	318	356	400	445	559	622	711
L1	mm	-	-	-	-	178	283	308	333	371	416	460	575	638	727
L2	mm	108	117	127	140	165	267	292	318	356	400	445	559	622	711
H	mm	163	193	250	291	345	377	405	468	620	*708	*777	*935	*906	
W	mm	100	125	160	160	180	220	250	280	320	400	*450	*500	*560	*600
H1	mm	-	-	-	-	-	-	-	-	-	-	836	854	997	1230
W1	mm	-	-	-	-	-	-	-	-	-	-	460	460	460	300
T	N.m	-	-	-	-	-	52	90	137	236	390	556	1003	1962	3465
WT(RF)	kg	7.7	11.3	16.8	21.2	32.6	28	36	50	75	140	200	287	510	720

多夹式三偏心多层次硬密封蝶阀 Wafer three eccentric multi-level hard seal butterfly valve

D373H.Y.F-10~25C.P.R.I



主要连接尺寸 Main connection dimensions

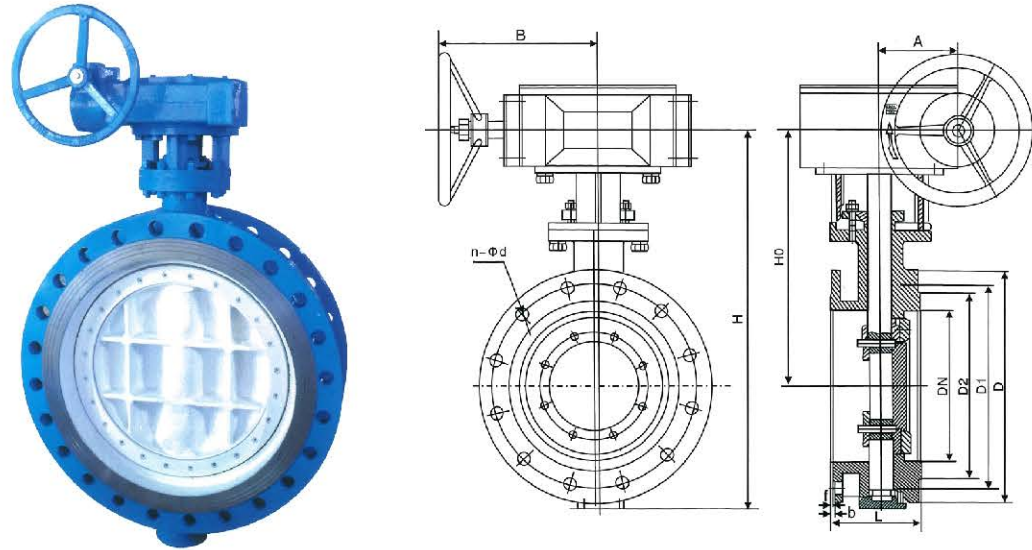
PN	DN	标准值 Normal					参考值 Reference				
		L	D	D1	Z-d	H	H0	A	B	W(kg)	
1.0 MPa	50	43	99	125	4-18	170	130	45	120	6.6	
	65	46	118	145	4-18	170	145	45	120	8.2	
	80	49	132	160	4-18	230	152	45	120	10.2	
	100	64	156	180	4-18	320	192	45	120	13.6	
	125	70	184	210	4-18	345	200	45	120	17.3	
	150	70	211	240	4-22	385	230	66	150	22.3	
	200	71	266	295	4-22	471	297	85	170	43.2	
	250	76	319	350	4-22	533	327	85	170	63	
	300	83	370	400	4-22	606	364	106	205	104.1	
	350	92	420	460	4-22	694	404	106	205	133	
	400	102	480	515	4-26	757	444	130	240	180	
	450	114	530	565	4-26	814	472	155	240	236	
	500	127	582	620	4-26	902	522	169	306	290	
	600	154	682	725	4-30	1048	590	198	324	419	
	700	165	704	840	4-30	1277	810	220	335	539	
800	190	901	950	4-33	1385	844	241	356	656		
900	203	1001	1050	4-33	1490	890	241	356	788		
1000	216	1112	1160	4-36	1620	950	241	356	887		
1.6 MPa	50	43	99	125	4-18	170	130	45	120	6.6	
	65	46	118	145	4-18	170	145	45	120	8.2	
	80	49	132	160	4-18	230	152	45	120	10.2	
	100	64	156	180	4-18	320	192	45	120	13.6	
	125	70	184	210	4-18	345	200	45	120	17.3	
	150	70	211	240	4-22	385	230	66	150	22.3	
	200	71	266	295	4-22	471	297	85	170	43.2	
	250	76	319	355	4-26	533	327	85	170	63	

注: 可根据ANSI, JIS, DIN标准及非标尺寸生产。
 Note: According to ANSI, JIS, DIN standards and production of non-standard size.

PN	DN	标准值 Normal					参考值 Reference				
		L	D	D1	Z-d	H	H0	A	B	W(kg)	
1.6 MPa	300	83	370	410	4-26	606	364	106	205	104.1	
	350	92	429	470	4-26	694	404	106	205	133	
	400	102	480	525	4-26	757	444	130	240	180	
	450	114	530	585	4-30	814	472	155	240	236	
	500	127	582	650	4-30	902	522	169	306	290	
	600	154	682	770	4-33	1048	590	198	324	419	
	700	165	794	840	4-36	1277	810	220	335	539	
	800	190	901	950	4-36	1385	844	241	356	656	
	900	203	1001	1050	4-39	1490	890	241	356	788	
	1000	216	1112	1170	4-39	1620	950	241	356	887	
2.5 MPa	50	43	99	125	4-18	170	130	45	120	17.5	
	65	46	118	145	4-18	170	145	45	120	22.2	
	80	49	132	160	4-18	230	152	45	120	30.5	
	100	64	156	180	4-18	343	242	206	120	36.6	
	125	70	184	220	4-22	385	254	206	120	44.3	
	150	70	211	250	4-26	481	320	206	475	46.2	
	200	71	274	310	4-26	547	355	442	610	92.3	
	250	76	330	370	4-26	621	389	442	610	140.6	
	300	83	389	430	4-30	653	423	558	670	166.5	
	350	92	465	510	4-30	730	463	558	670	188.3	

法兰式三偏心多层次硬密封蝶阀
Flange three eccentric multi-level hard seal butterfly valve

D343H.Y.F-10~16C.P.R.I



主要连接尺寸 Main connection dimensions

PN	标准值 Normal							参考值 Reference						
	DN	L	D	D1	D2	n-φd	b	f	H	H0	A	B	W(kg)	
1.0 MPa	50	108	165	125	99	4-18	20	2	170	130	45	120	7	
	65	112	185	145	118	4-18	20	2	170	145	45	120	9.2	
	80	114	200	160	132	8-18	20	2	230	152	45	120	11.6	
	100	127	220	180	156	8-18	22	2	320	192	45	120	14	
	125	140	250	210	184	8-18	22	2	345	200	45	120	18	
	150	140	285	240	211	8-22	24	2	385	230	66	150	23	
	200	152	340	295	266	8-22	24	2	471	297	85	170	44	
	250	165	405	355	319	12-22	26	2	533	327	85	170	64	
	300	178	445	400	370	12-22	26	2	606	364	106	205	105	
	350	190	505	460	429	16-22	26	2	694	404	106	205	134	
1.6 MPa	400	216	565	515	480	16-26	26	2	757	444	130	240	181	
	450	222	615	565	530	20-26	28	2	814	472	155	240	237	
	500	229	670	620	582	20-26	28	2	902	522	169	306	292	
	600	267	780	725	682	20-30	34	2	1048	590	198	324	421	
	700	292	895	840	794	24-30	34	5	1277	810	220	335	541	
	800	318	1015	950	901	24-33	36	5	1385	844	241	356	658	
	900	330	1115	1050	1001	28-33	38	5	1490	890	241	356	790	
	1000	410	1230	1160	1112	28-36	38	5	1620	950	241	356	890	
	1.6 MPa	50	108	165	125	99	4-18	20	2	170	130	45	120	7
		65	112	185	145	118	4-18	20	2	170	145	45	120	9.2
80		114	200	160	132	8-18	20	2	230	152	45	120	11.6	
100		127	220	180	156	8-18	22	2	320	192	45	120	14	
125		140	250	210	184	8-18	22	2	345	200	45	120	18	
150		140	285	240	211	8-22	24	2	385	230	66	150	23	
200		152	340	295	266	12-22	24	2	471	297	85	170	44	
250		165	405	355	319	12-26	26	2	533	327	85	170	64	

注：可根据ANSI、JIS、DIN标准及非标尺寸生产。
Note: According to ANSI, JIS, DIN standards and production of non-standard size.

法兰式三偏心多层次硬密封蝶阀
Flange three eccentric multi-level hard seal butterfly valve

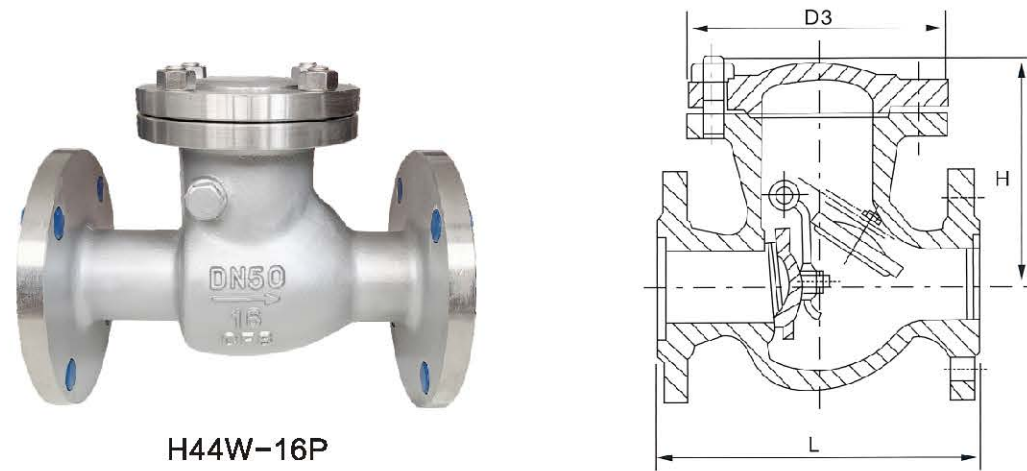
D343H.Y.F-10~16~40C.P.R.I



主要连接尺寸 Main connection dimensions

PN	标准值 normal							参考值 Reference					
	DN	L	D	D1	D2	n-φd	b	f	H	H0	A	B	W(kg)
1.6 MPa	300	178	460	410	370	12-26	28	2	694	364	106	205	105
	350	190	520	470	429	16-26	30	2	606	404	106	205	134
	400	216	580	525	480	16-30	32	2	757	444	130	240	181
	450	222	640	585	548	20-30	40	2	814	472	155	240	237
	500	229	715	650	609	20-33	44	2	902	522	169	306	292
	600	267	840	770	720	20-36	54	2	1048	590	198	324	421
	700	292	910	840	794	24-36	40	5	1277	810	220	335	541
	800	318	1025	950	901	24-39	42	5	1385	844	241	356	658
	900	330	1125	1050	1001	28-39	44	5	1490	890	241	356	790
	1000	410	1225	1170	1112	28-42	46	5	1620	950	241	356	890
2.5 MPa	50	108	165	125	99	4-18	20	2	170	130	45	120	13
	65	112	185	145	118	8-18	22	2	265	210	35	90	15
	80	114	200	160	132	8-18	24	2	310	233	35	90	19
	100	127	235	190	156	8-22	24	2	343	242	45	120	23
	125	140	270	220	184	8-26	26	2	385	254	45	120	45
	150	140	300	250	211	8-26	28	2	445	580	66	150	66
	200	152	360	310	274	12-26	30	2	510	297	85	170	107
	250	165	425	370	330	12-30	32	2	569	339	85	170	136
	300	178	485	430	389	16-30	34	2	653	375	106	205	185
	350	190	555	490	448	16-33	38	2	730	420	106	205	240
4.0 MPa	400	216	620	550	503	16-36	40	2	810	463	130	240	294
	450	222	670	600	548	20-36	46	2	850	495	155	240	423
	500	229	730	660	609	20-36	48	2	940	566	169	306	546
	600	267	845	770	720	20-39	58	2	1150	630	198	324	660
	700	292	960	875	820	24-42	50	5	1195	727	220	335	795
	800	318	1085	990	609	20-36	54	5	1268	810	45	356	894
	50	108	165	125	99	4-18	20	2	170	130	35	120	13
	65	112	185	145	118	8-18	22	2	265	210	35	90	15
	80	114	200	160	132	8-18	20	2	310	233	35	90	19
	100	127	235	190	156	8-22	24	2	343	242	45	120	25
125	140	270	220	184	8-26	26	2	385	254	45	120	46	
150	140	300	250	211	8-26	28	2	445	280	66	150	67	
200	152	375	320	284	12-30	34	2	510	297	85	170	109	
250	165	450	385	345	12-33	38	2	569	339	85	170	138	
300	178	515	450	409	16-33	42	2	653	375	106	205	186	
350	190	580	510	465	16-36	46	2	730	420	106	205	241	
400	216	660	585	535	16-39	50	2	810	463	130	240	295	
450	222	685	610	560	20-39	57	2	850	495	155	240	424	
500	229	755	670	615	20-42	57	2	940	566	169	306	547	
600	267	890	795	735	20-48	72	2	1150	630	198	324	662	
700	292	995	900	835	24-54	68	5	1195	727	220	335	797	
800	318	1035	1030	960	24-58	76	5	1268	810	241	356	898	

国标旋启式止回阀 GB/T Swing Check Valve



H44W-16P

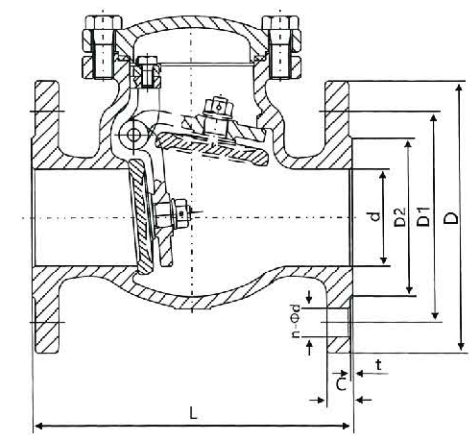
采用标准 Adopted standard

设计标准 Design standard	GB12235-89
结构长度 Structural length	GB12221-89
法兰连接 Flange connection	GB9113-88、JB/T79-94
试验与检验 Test and inspection	GB/T13927-92、JB/T9092-99

主要尺寸及重量 Main dimensions and weight

公称压力 Nominal pressure PN(MPa)	公称直径 Nominal diameter DN(mm)	尺寸 Dimensions(mm)			重量 Weight (kg)
		L	D	D1	
1.6MPa	15				
	20				
	25	160	115	85	-
	32	180	140	100	-
	40	200	150	110	15.2
	50	230	165	125	21.3
	65	290	185	145	28.1
	80	310	200	160	37.6
	100	350	220	180	56.7
	125	400	250	210	91
	150	480	285	240	129
	200	495	340	295	210
	250	622	405	355	290
	300	698	460	410	320
	350	787	520	470	350
	400	914	580	525	400
450	978	640	585	550	
500	978	715	650	850	
600	1295	840	770	1300	
2.5MPa	200	533	360	310	210
	250	622	425	370	294
	300	711	485	430	367
	350	838	555	490	410
	400	864	620	550	461
	500	1016	730	660	870
4.0MPa	50	230	165	125	27
	65	290	185	145	37
	80	310	200	160	57
	100	350	235	190	89
	125	400	270	220	135
	150	480	300	250	184
200	530	375	320	266	

美标止回阀 ANSI/ASME Check valve



设计制造标准

设计与制造: API 6D, BS 1868, ASME B16.34
 结构长度: ASME B16.10, API 6D
 法兰连接尺寸: ASME B16.5, ASME B16.25, ASME B16.47
 检验和测试: ISO 5208, API 598, BS 6755

Design & Manufacture Standard

Design & Manufacture: API 6D, BS 1868, ASME B16.34
 Face to Face: ASME B16.10, API 6D
 Connection Dimension: ASME B16.5, ASME B16.25, ASME B16.47
 Inspection and Test: ISO 5208, API 598, BS 6755

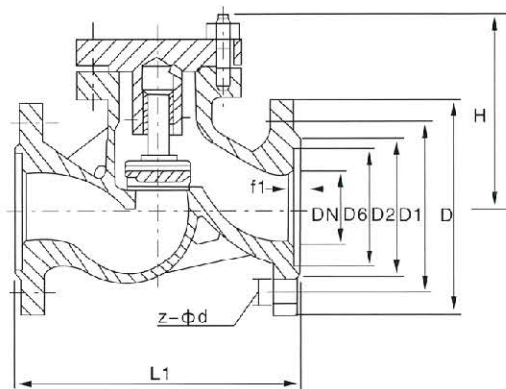
主要尺寸及重量 Main size and weight

Class 150								
Size	d	D	D1	D2	t	C	n-φb	L
DN15	18	90	60.3	34.8	1.6	11.5	4-φ16	108
DN20	20	100	69.9	42.9	1.6	13	4-φ16	117
DN25	25	110	79.4	50.8	1.6	14.5	4-φ16	127
DN32	32	115	88.9	63.5	1.6	16	4-φ16	140
DN40	38	125	98.4	73	1.6	17.5	4-φ16	165
DN50	50	150	120.7	92.1	1.6	19	4-φ19	203
DN65	64	180	139.7	104.8	1.6	22.5	4-φ19	216
DN80	76	190	152.4	127	1.6	24	4-φ19	241
DN100	100	230	190.5	157.2	1.6	24	8-φ19	292
DN125	125	255	215.9	185.7	1.6	24	8-φ22	330
DN150	150	280	241.3	315.9	1.6	26	8-φ22	356
DN200	200	345	298.5	269.9	1.6	29	8-φ22	495
DN250	250	405	362	323.8	1.6	31	12-φ25	622
DN300	300	485	431.8	381	1.6	32	12-φ25	698
Class 300								
Size	d	D	D1	D2	t	c	n-φb	L
DN40	40	155	114.5	73	1.6	21	4-φ22	241
DN50	50	165	127.0	92	1.6	22	8-φ19	267
DN65	65	190	149.4	105	1.6	25	8-φ22	292
DN80	80	210	168.1	127	1.6	29	8-φ22	318
DN100	100	255	200.2	157	1.6	32	8-φ22	356
DN125	125	280	235.0	186	1.6	35	12-φ22	400
DN150	150	320	269.7	216	1.6	37	12-φ25	444
DN200	200	380	330.2	270	1.6	41	16-φ29	533
DN250	250	445	387.4	324	1.6	48	16-φ32	622
DN300	300	520	450.8	381	1.6	51	20-φ32	711
DN350	350	585	514.4	413	1.6	54	20-φ35	838
DN400	400	650	571.5	470	1.6	57	24-φ35	864
DN450	450	710	628.8	533	1.6	60	24-φ35	978
DN500	500	775	685.8	584	1.6	64	24-φ41	1016
DN600	600	915	812.8	692	1.6	70	28-φ44	1346
DN650	650	970	876.3	749	1.6	79	28-φ44	1346

国标升降式止回阀 GB/T Lift Check Valve



H41W-16P



主要性能参数 Main performance parameters

公称压力 Nominal pressure	1.6	2.5	4.0	6.4	10.0	Mpa
壳体试验 Shell test	2.4	3.75	6.0	9.6	15.0	
密封试验 Seal test	1.76	2.75	4.4	7.04	11.0	
气密试验 Airproof test	0.5~0.7					
阀体材料 Body materials	WCB		P		I	
适用介质 Applicable medium	水、油品、蒸汽 Water, oil products and steam		硝酸类 Nitric acid products		油品 Oil products	
适用温度 Applicable temperature	≤425℃		<150℃		<550℃	

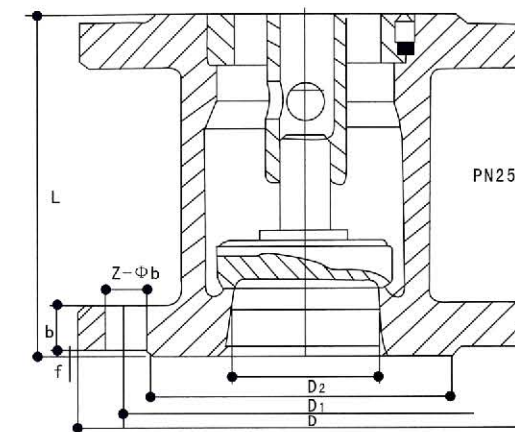
主要尺寸及重量 Main dimensions and weight

公称压力 Nominal pressure PN(MPa)	公称口径 Nominal diameter DN(mm)	尺寸 Dimensions(mm)		重量 Weight (kg)
		D	D1	
1.6MPa	15			
	20			
	25	115	85	3.3
	32	140	100	5.0
	40	150	110	6.3
	50	165	125	8.9
	65	185	145	13.2
	80	200	160	24
	100	220	180	48
2.5MPa	125	250	210	60
	150	285	240	95
	200	340	295	160
	15	95	65	6
	20	105	75	9.1
	25	115	85	11.8
	32	140	100	12
	40	150	110	15.8
	50	165	125	17
	65	185	145	23
	80	200	160	32
100	235	190	44.4	
125	270	220	65.5	
150	300	250	99.3	
200	360/375	310/320	190	
4.0MPa	15	95	66.5	7
	20	120	82.5	11
	25	125	89	13
	32	135	98.5	14
	40	155	114.5	20
	50	165	127	23
	80	210	168.5	46
	100	275	216	68
	150	355	292	-
	200	420	349	-

国标立式止回阀 GB/T Vertical Check Valve



H42W-16P

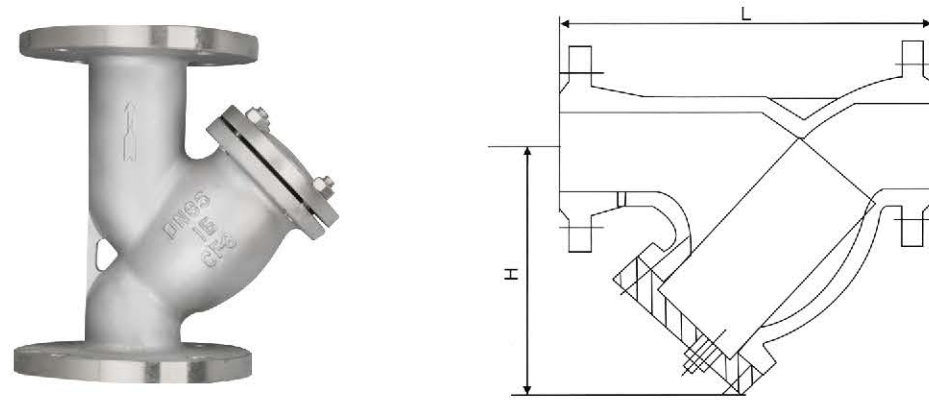


主要连接尺寸和外形尺寸 Main connecting and overall dimensions

型号 Type	公称口径 DN(mm)	L	D	D1	D2	b	z-φd
H42W-16P-R	15	85	95	65	45	16	4-φ14
	20	95	105	75	55	16	4-φ14
	25	105	115	85	65	16	4-φ14
	32	150	135	100	78	16	4-φ18
	40	165	145	110	88	18	4-φ18
	50	170	160	125	100	20	4-φ18
	65	180	180	145	120	22	8-φ18
	80	185	195	160	135	22	8-φ18
	100	310	230	190	160	24	8-φ23
	125	275	275	220	188	28	8-φ25
	150	310	300	250	218	30	8-φ25
	200	380	360	310	278	34	-

国标Y型过滤器 GB/T Y-type filter

SY14、GL41H型过滤器 SY14、GL41H telescopic filter



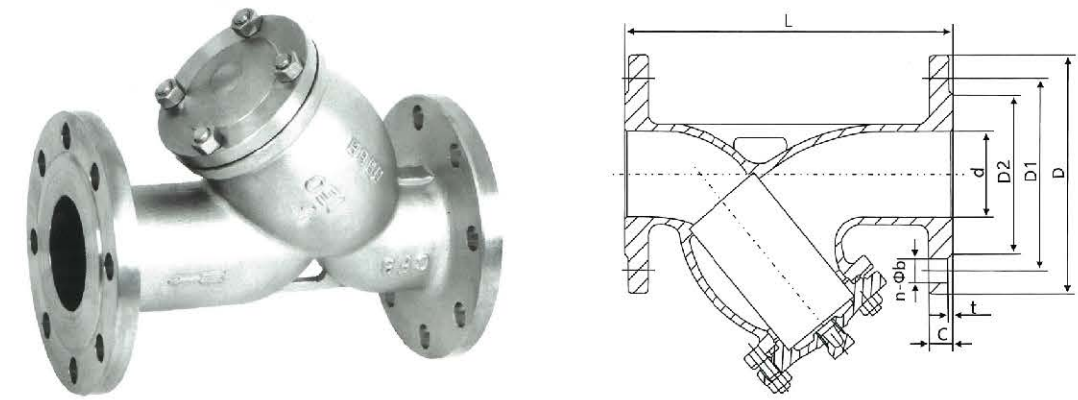
技术参数 Technical parameters

工作压力 Work pressure	试验压力 Test pressure	工作温度 Work temperature	阀体 Valve body	滤网 Filter
1.6~4.0MPa	2.4~6.0MPa	-80~250℃	不锈钢 Stainless steel	不锈钢 Stainless steel

主要连接尺寸 Main connection dimensions

公称通径 DN(mm)	L	H
15	150	70
20	150	70
25	160	80
32	180	90
40	200	100
50	220	130
65	250	165
80	280	195
100	320	230
125	360	300
150	430	335
200	520	420
250	640	500
300	720	580
350	780	640
400	860	700
450	980	790
500	1040	875

美标Y型过滤器 ANSI/ASME Y-type filter



性能规范

公称压力: Class150/300
 强度试验压力: PT1.5PN
 适用介质: SY41-(150-300Lb)C 水、油品、气
 适用温度: -29~180℃
 适用介质: SY41-(150-300Lb)P 硝酸类、SY41-(150-300Lb)R 醋酸类
 适用温度: -40~180℃

Specifications

Nominal pressure: Class150 / 300
 Strength Test pressure: PT1.5PN
 Applicable medium: SY41- (150-300Lb) C Water, oil, gas
 Applicable temperature: -29 ~ 180 °C
 Applicable medium: SY41- (150-300Lb) P Nitric acid, SY41- (150-300Lb) R Acetic acid
 Applicable temperature: -40 ~ 180 °C

主要零件材料 Materials of main parts

零件名称 Parts name	SY41-(16-64)C	SY41-(16-64)P	SY41-(16-64)R
阀体 Body	WCB	ZG1Cr18Ni9Ti CF8	ZG1Cr18Ni12Mo2Ti CF8M
阀盖 Bonnet	WCB	ZG1Cr18Ni9Ti CF8	ZG1Cr18Ni12Mo2Ti CF8M
过滤网 Mesh	1Cr18Ni9Ti 304	1Cr18Ni9Ti 304	1Cr18Ni12Mo2Ti 316
垫片 Gasket	聚四氟乙烯/钢带石墨缠绕 Polytetrafluorethylene(PTFE)/Stainless steel and graphite spiral wound		

主要尺寸及重量 Main size and weight

Size	Class150							
	d	D	D1	D2	t	C	n-φb	L
DN15	15	90	60.3	34.9	1.6	11.5	4-φ16	130
DN20	20	100	69.9	42.9	1.6	13	4-φ16	140
DN25	25	110	79.4	50.8	1.6	14.5	4-φ16	150
DN32	32	115	88.9	63.5	1.6	16	4-φ16	170
DN40	38	125	98.4	73	1.6	17.5	4-φ16	200
DN50	50	150	120.7	92.1	1.6	19.5	4-φ19	220
DN65	64	180	139.7	104.8	1.6	22.5	4-φ19	252
DN80	76	190	152.4	127	1.6	24	4-φ19	280
DN100	100	230	190.5	157.2	1.6	24	8-φ19	320
DN125	125	255	215.9	185.7	1.6	24	8-φ22	350
DN150	150	280	241.3	215.9	1.6	26	8-φ22	400
DN200	200	345	298.5	269.9	1.6	29	8-φ22	480
DN250	250	405	362	323.8	1.6	31	12-φ25	550
DN300	300	485	431.8	381	1.6	32	12-φ25	610
DN350	350	535	476.3	412.8	1.6	35.5	12-φ29	680
DN400	400	595	539.8	469.9	1.6	37	16-φ29	780